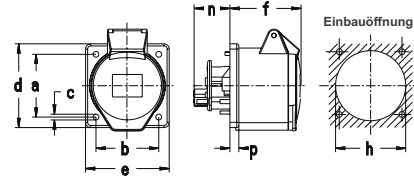


	<table border="1"> <tr><td>Amp.</td><td>16</td><td>32</td></tr> <tr><td>Pole</td><td>7</td><td>7</td></tr> <tr><td>b</td><td>60</td><td>60</td></tr> <tr><td>c</td><td>5,3</td><td>5,3</td></tr> <tr><td>d</td><td>80</td><td>97</td></tr> <tr><td>e</td><td>74</td><td>82</td></tr> <tr><td>f</td><td>90</td><td>105</td></tr> <tr><td>l</td><td>31</td><td>45</td></tr> <tr><td>n</td><td>129</td><td>155</td></tr> <tr><td>M</td><td>20</td><td>25</td></tr> </table>	Amp.	16	32	Pole	7	7	b	60	60	c	5,3	5,3	d	80	97	e	74	82	f	90	105	l	31	45	n	129	155	M	20	25	<p>Wandsteckdosen, Außenbefestigung, 1 Kabeleinführung oben, IP 44</p>									
Amp.	16	32																																							
Pole	7	7																																							
b	60	60																																							
c	5,3	5,3																																							
d	80	97																																							
e	74	82																																							
f	90	105																																							
l	31	45																																							
n	129	155																																							
M	20	25																																							
	<table border="1"> <tr><td>Amp.</td><td>16</td><td>32</td></tr> <tr><td>Pole</td><td>7</td><td>7</td></tr> <tr><td>b</td><td>66,5</td><td>66,5</td></tr> <tr><td>c</td><td>5</td><td>5</td></tr> <tr><td>d</td><td>96</td><td>96</td></tr> <tr><td>e</td><td>95</td><td>95</td></tr> <tr><td>f</td><td>146</td><td>157</td></tr> <tr><td>l</td><td>47,5</td><td>47,5</td></tr> <tr><td>n</td><td>164</td><td>173</td></tr> <tr><td>v</td><td>7</td><td>7</td></tr> <tr><td>M</td><td>20/25</td><td>20/25</td></tr> </table>	Amp.	16	32	Pole	7	7	b	66,5	66,5	c	5	5	d	96	96	e	95	95	f	146	157	l	47,5	47,5	n	164	173	v	7	7	M	20/25	20/25	<p>Wandsteckdosen, Innenbefestigung, Kabeleinführung 2 x oben und unten, ausbrechbar, IP 44</p>						
Amp.	16	32																																							
Pole	7	7																																							
b	66,5	66,5																																							
c	5	5																																							
d	96	96																																							
e	95	95																																							
f	146	157																																							
l	47,5	47,5																																							
n	164	173																																							
v	7	7																																							
M	20/25	20/25																																							
	<table border="1"> <tr><td>Amp.</td><td>16</td><td>32</td></tr> <tr><td>Pole</td><td>7</td><td>7</td></tr> <tr><td>d</td><td>153</td><td>181</td></tr> <tr><td>Øe</td><td>65</td><td>72</td></tr> <tr><td>f</td><td>75</td><td>88</td></tr> <tr><td>m</td><td>117</td><td>138</td></tr> <tr><td>n</td><td>37</td><td>46</td></tr> <tr><td>Øp</td><td>8/21</td><td>11/24</td></tr> </table>	Amp.	16	32	Pole	7	7	d	153	181	Øe	65	72	f	75	88	m	117	138	n	37	46	Øp	8/21	11/24	<p>Stecker, Kabelknickschutz, IP 44</p>															
Amp.	16	32																																							
Pole	7	7																																							
d	153	181																																							
Øe	65	72																																							
f	75	88																																							
m	117	138																																							
n	37	46																																							
Øp	8/21	11/24																																							
	<table border="1"> <tr><td>Amp.</td><td>16</td><td>32</td></tr> <tr><td>Pole</td><td>7</td><td>7</td></tr> <tr><td>b</td><td>60</td><td>60</td></tr> <tr><td>c</td><td>5,3</td><td>5,3</td></tr> <tr><td>d</td><td>80</td><td>97</td></tr> <tr><td>e</td><td>74</td><td>82</td></tr> <tr><td>f</td><td>73</td><td>86</td></tr> <tr><td>l</td><td>31</td><td>45</td></tr> <tr><td>n</td><td>117</td><td>141</td></tr> <tr><td>M</td><td>20</td><td>25</td></tr> </table>	Amp.	16	32	Pole	7	7	b	60	60	c	5,3	5,3	d	80	97	e	74	82	f	73	86	l	31	45	n	117	141	M	20	25	<p>Wandgerätestecker, Außenbefestigung, 1 Kabeleinführung oben, IP 44</p>									
Amp.	16	32																																							
Pole	7	7																																							
b	60	60																																							
c	5,3	5,3																																							
d	80	97																																							
e	74	82																																							
f	73	86																																							
l	31	45																																							
n	117	141																																							
M	20	25																																							
	<table border="1"> <tr><td>Amp.</td><td>16</td><td>32</td></tr> <tr><td>Pole</td><td>7</td><td>7</td></tr> <tr><td>a</td><td>40</td><td>45</td></tr> <tr><td>b</td><td>68</td><td>78</td></tr> <tr><td>c</td><td>5,5</td><td>5,5</td></tr> <tr><td>d</td><td>66</td><td>75</td></tr> <tr><td>e</td><td>80</td><td>90</td></tr> <tr><td>f</td><td>92</td><td>103</td></tr> <tr><td>h</td><td>52</td><td>60</td></tr> <tr><td>n</td><td>110</td><td>129</td></tr> <tr><td>p</td><td>9,5</td><td>9,5</td></tr> <tr><td>y</td><td>38</td><td>44</td></tr> <tr><td>z</td><td>46</td><td>54</td></tr> </table> <p>Befestigungsmaß = a + b, Flanschmaß = d + e</p>	Amp.	16	32	Pole	7	7	a	40	45	b	68	78	c	5,5	5,5	d	66	75	e	80	90	f	92	103	h	52	60	n	110	129	p	9,5	9,5	y	38	44	z	46	54	<p>Anbaugerätestecker schräg, Flanschgehäuse angeschraubt, IP 44</p>
Amp.	16	32																																							
Pole	7	7																																							
a	40	45																																							
b	68	78																																							
c	5,5	5,5																																							
d	66	75																																							
e	80	90																																							
f	92	103																																							
h	52	60																																							
n	110	129																																							
p	9,5	9,5																																							
y	38	44																																							
z	46	54																																							
	<table border="1"> <tr><td>Amp.</td><td>16</td><td>32</td></tr> <tr><td>Pole</td><td>7</td><td>7</td></tr> <tr><td>d</td><td>167</td><td>196</td></tr> <tr><td>Øe</td><td>65</td><td>72</td></tr> <tr><td>f</td><td>85</td><td>98</td></tr> <tr><td>m</td><td>119</td><td>141</td></tr> <tr><td>Øp</td><td>8/21</td><td>11/24</td></tr> </table>	Amp.	16	32	Pole	7	7	d	167	196	Øe	65	72	f	85	98	m	119	141	Øp	8/21	11/24	<p>Kupplungen, Kabelknickschutz, IP 44</p>																		
Amp.	16	32																																							
Pole	7	7																																							
d	167	196																																							
Øe	65	72																																							
f	85	98																																							
m	119	141																																							
Øp	8/21	11/24																																							

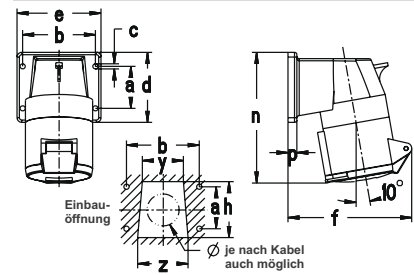
 6 P + E	Ampère Polzahl	230 V 50/60 Hz 7-polig 9 h	400 V 50/60 Hz 7-polig 6 h	500 V 50/60 Hz 7-polig 7 h		
Artikelnummern						
 Abb. 130706	16 7 32 7	110 709 130 709	110 706 130 706	110 707 130 707	10 10	251 349
 Abb. 131706	16 7 32 7	111 709 131 709	111 706 131 706	111 707 131 707	5 5	449 518
 Abb. 230706	16 7 32 7	210 709 230 709	210 706 230 706	210 707 230 707	10 10	203 291
 Abb. 630706	16 7 32 7	610 709 630 709	610 706 630 706	610 707 630 707	10 10	204 287
 Abb. 631706	16 7 32 7	611 709 631 709	611 706 631 706	611 707 631 707	10 10	204 305
 Abb. 330706	16 7 32 7	310 709 330 709	310 706 330 706	310 707 330 707	10 10	245 339



Amp.	16	32
Pole	7	7
a	60	60
b	60	60
c	5,5	5,5
d	80	80
e	80	80
f	60	60
h	67	71
n	23,5	23,5
p	8,5	8,5

Befestigungsmaß = a + b,
Flanschmaß = d + e

Anbaudosen, gerade,
Flansch angeschraubt,
Flanschmaß 80 x 80,
IP 44



Amp.	16	32
Pole	7	7
a	40	45
b	68	78
c	5,5	5,5
d	66	75
e	80	90
f	110	124
h	52	60
n	122	142
p	9,5	9,5
y	38	44
z	46	54

Befestigungsmaß = a + b,
Flanschmaß = d + e

Anbaudosen schräg,
Flanschgehäuse angeschraubt,
IP 44



Ampère
Polezahl

230 V
50/60 Hz
7-polig
9 h

400 V
50/60 Hz
7-polig
6 h

500 V
50/60 Hz
7-polig
7 h



Artikelnummern



Abb. 431706

16 7
32 7

411 709
431 709

411 706
431 706

411 707
431 707

10 218
10 277



Abb. 534

16 7
32 7

514 709
534 709

514 706
534 706

514 707
534 707

10 240
10 330